



Repair Patches



Repair Patches

Inspired by a nurse, CleanPatch was developed as a cost-effective solution to the infection risks that arise as a result of damaged healthcare surfaces. The TGA approved system is now being utilised as part of a surface inspection and repair program in thousands of healthcare facilities globally.

It is common to find unauthorized repairs using solutions such as plaster and tapes, which has been proven as ineffective and risky. CleanPatch is the first medical surface repair patch system to correctly restore a wide variety of damaged, critical patient surfaces to an intact and hygienic state.

Clinically tested.

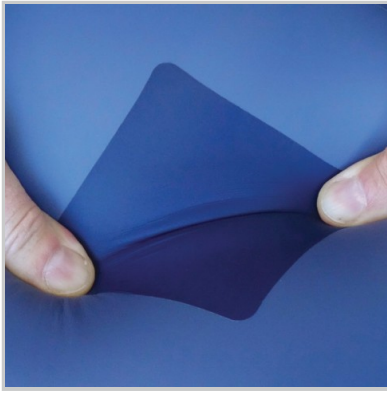
- Validated by independent infection prevention professionals.
- Durable and impervious to fluids under rigorous conditions.
- Fully cleanable with hospital disinfectants.

Safe and Simple.

- Early intervention reduces the risk of cross contamination.
- Made of latex-free, biocompatible materials.
- Simple peel and stick to apply in seconds.

Cost Effective.

- Extends the life of capital equipment.
- Proactively improves both patient and staff safety.
- Real savings in equipment repair versus replacement.



Stretch Material Repair Patches



Vinyl Surface Repair Patches



Gel Pad Repair Patches



Stretch Material Repair Patches

CleanPatch is the first medical-grade 'stretch' repair patch for bed and stretcher mattresses and comfort chairs that quickly and cost effectively restores damaged pressure care surfaces to ensure they are completely intact and hygienic.



Stretch Patches - Variety Kit



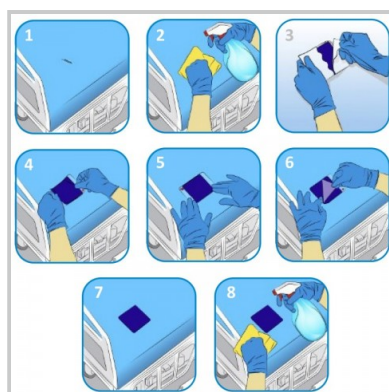
Stretch Patches - Small



Stretch Patches - Medium



Stretch Patches - Large



Stretch Patch Application

Stretch Patches - Variety Kit

Original CleanPatch designed to repair common patient surfaces.

Key Benefits

- Constructed of ultra thin, yet very tough PU material
- Full two way stretch to conform to a pressure care surface
- Glue seals right to the edges preventing fluid ingress and lift
- Cost effectively extend the life of capital equipment
- Fully cleanable with hospital grade disinfectants
- Clinically validated and TGA registered

Product Code

- 10 pack - CPSP-18003

Variety Kit Includes

- 5 x Small round patches
- 3 x Medium square patches
- 2 x Large rectangle patches

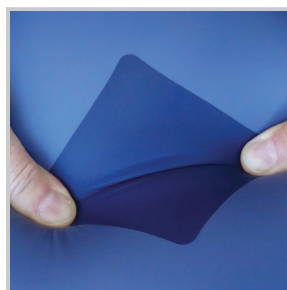
Patch Dimensions

- 51mm Diameter small round patch
- 89 x 89mm Medium square patch
- 89 x 152mm Large rectangle patch
- There must be a >13mm margin around the damage site to ensure optimal adhesion.

Why Buy

The stretch patch has been designed to repair soft pressure relieving surfaces commonly found on stretcher mattresses and comfort chairs. This variety pack has been developed for small facilities with lower usage or for larger units to test their long term requirements. The combination of the smaller round dot to the larger rectangle shape ensures any type of damage is covered correctly and efficiently.

[View how to correctly apply the Stretch Patch.](#)



Stretch Patches - Small

50mm diameter round stretch patches.

Key Benefits

- Constructed of ultra thin, yet very tough PU material
- Full two way stretch to conform to a pressure care surface
- Glue seals right to the edges preventing fluid ingress and lift
- Cost effectively extend the life of capital equipment
- Fully cleanable with hospital grade disinfectants
- Clinically validated and TGA registered

Patch Dimensions

- 51mm Diameter small round patch
- There must be a >13mm margin around the damage site to ensure optimal adhesion.

Product Codes

- 10 pack - CPSP-11003
- 30 pack - CPSP-11001

Why Buy

The stretch patch has been designed to repair soft pressure relieving surfaces commonly found on stretcher mattresses and comfort chairs. These small round patches are very useful for minor damage such as needle stick or sharp point abrasion that can happen on the soft pressure care surfaces so commonly in use in healthcare facilities today. A very cost effective way of quickly ensuring that damage is checked and doesn't grow or remain an infection risk.

[View how to correctly apply the Stretch Patch.](#)



Stretch Patches - Medium

89mm square stretch patches.

Key Benefits

- Constructed of ultra thin, yet very tough PU material
- Full two way stretch to conform to a pressure care surface
- Glue seals right to the edges preventing fluid ingress and lift
- Cost effectively extend the life of capital equipment
- Fully cleanable with hospital grade disinfectants
- Clinically validated and TGA registered

Patch Dimensions

- 89 x 89 mm Medium square patch
- There must be a >13mm margin around the damage site to ensure optimal adhesion.

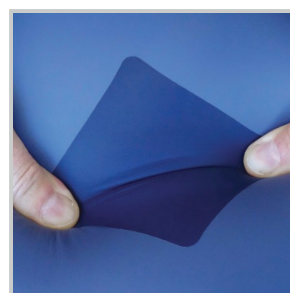
Product Codes

- 5 pack - CPSP-10003
- 20 pack - CPSP-10001

Why Buy

The stretch patch has been designed to repair soft pressure relieving surfaces commonly found on stretcher mattresses and comfort chairs. These square patches are very useful for standard damage such as cuts and tears found on the soft pressure care surfaces so commonly in use in healthcare facilities today. A very cost effective way of quickly ensuring that damage is checked and doesn't grow or remain an infection risk.

[View how to correctly apply the Stretch Patch.](#)



Stretch Patches - Large

152mm x 89mm rectangle stretch patches.

Key Benefits

- Constructed of ultra thin, yet very tough PU material
- Full two way stretch to conform to a pressure care surface
- Glue seals right to the edges preventing fluid ingress and lift
- Cost effectively extend the life of capital equipment
- Fully cleanable with hospital grade disinfectants
- Clinically validated and TGA registered

Patch Dimensions

- 152 x 89 mm Large rectangle patch
- There must be a >13mm margin around the damage site to ensure optimal adhesion.

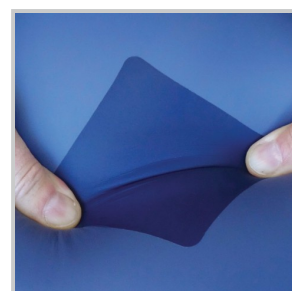
Product Codes

- 5 pack - CPSP-12003
- 10 pack - CPSP-12001

Why Buy

The stretch patch has been designed to repair soft pressure relieving surfaces commonly found on stretcher mattresses and comfort chairs. These large rectangle shaped patches are very useful for major damage such as rips and abrasion that can be found on the soft pressure care surfaces so commonly in use in healthcare facilities today. A cost effective way of quickly ensuring that damage is checked and doesn't remain an infection risk.

[View how to correctly apply the Stretch Patch.](#)

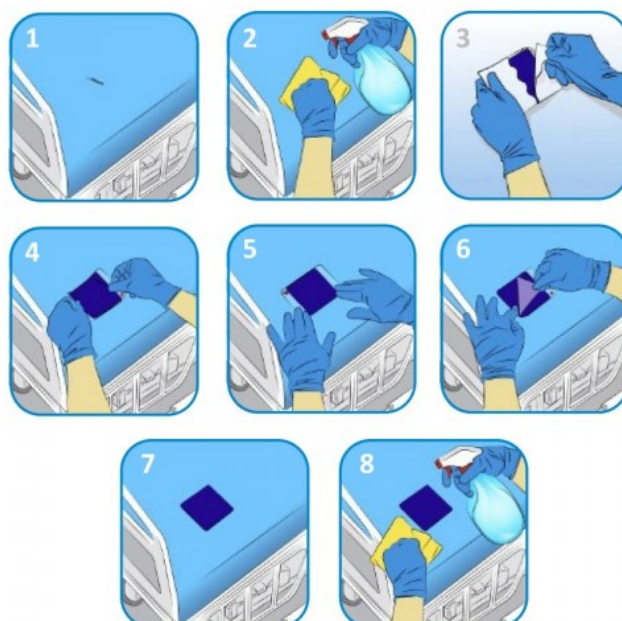


Stretch Patch Application

Instructions to apply the CleanPatch to damaged pressure care surfaces such as mattresses and comfort chairs.

Key Benefits

- Use CleanPatch on soft surfaces that are for pressure relief
- Apply on flat areas or over edges (2 dimensions)
- We recommend a maximum of 4 to 6 patches per mattress
- CleanPatch will adhere to the majority of PU or vinyl surfaces and some types of nylon
- Do not use CleanPatch on surfaces with signs of fluid ingress or contamination, such as staining or warping
- We do not recommend layering multiple patches to cover large areas
- CleanPatch may not adhere to some types of nylon or coatings that contain Teflon
- To avoid damaging the precise edge, DO NOT CUT CleanPatch



Related Product Codes

- Variety Kit - 10 pack - CPSP-18003
- Small Round - 10 pack - CPSP-11003
- Small Round - 30 pack - CPSP-11001
- Medium Square - 5 pack - CPSP-10003
- Medium Square - 20 pack - CPSP-10001
- Large Rectangle - 5 pack - CPSP-12003
- Large Rectangle - 10 pack - CPSP-12001

Why Buy

1. Identify the damaged area and select the correct sized patch.
2. Clean the surface as per facility protocol and allow to dry.
3. Remove the white backing from the CleanPatch.
4. Hold the edges of the patch and position it over the damage.
5. Apply firm pressure to the patch, out to the edges.
6. Slowly and carefully remove the clear top



Vinyl Surface Repair Patches

CleanPatch-V is a medical surface repair patch for vinyl upholstery, which restores damaged patient surfaces on clinical equipment such as chairs and exam tables, to ensure they are completely intact and hygienic.



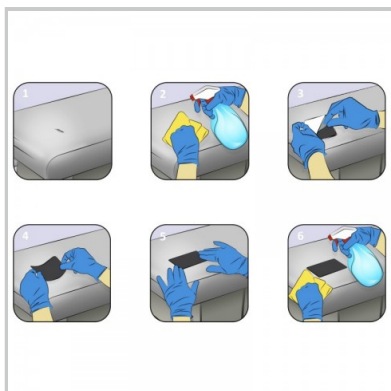
Vinyl Patches - Variety Kit



Vinyl Patches - Small



Vinyl Patches - Large



Vinyl Patch Application

Vinyl Patches - Variety Kit

CleanPatch-V is stronger and designed to repair the more demanding clinical patient surfaces.

Key Benefits

- Constructed of thin, yet very tough medical grade vinyl
- Conforms to a patient care surfaces such as chairs and exam tables
- Glue seals right to the edges preventing fluid ingress and lift
- Cost effectively extend the life of capital equipment
- Fully cleanable with hospital grade disinfectants
- Clinically validated and TGA registered

Product Code

- 10 pack - CPVP-23001

Variety Kit Includes

- 7 x Small strip patches
- 3 x Large rectangle patches

Patch Dimensions

- 44 x 100mm Small strip patch
- 145 x 200mm Large rectangle patch
- There must be a >25mm margin around the damage site to ensure optimal adhesion.

Why Buy

The vinyl patch has been designed to repair surfaces commonly found on clinical equipment such as chairs and exam tables. This variety pack has been developed for smaller facilities with lower usage or for larger units to test long term requirements. The combination of the smaller strips and the larger rectangle shapes ensures any type of damage is covered correctly and efficiently.

[View how to correctly apply the Vinyl Patch.](#)



Vinyl Patches - Small

CleanPatch-V is stronger and designed to repair the more demanding clinical patient surfaces.

Key Benefits

- Constructed of thin, yet very tough medical grade vinyl
- Conforms to a patient care surfaces such as chairs and exam tables
- Glue seals right to the edges preventing fluid ingress and lift
- Cost effectively extend the life of capital equipment
- Fully cleanable with hospital grade disinfectants
- Clinically validated and TGA registered

Product Code

- 10 pack - CPVP-21001

Patch Dimensions

- 44 x 100mm Small strip patch
- There must be a >25mm margin around the damage site to ensure optimal adhesion.

Why Buy

The vinyl patch has been designed to repair surfaces commonly found on clinical equipment such as chairs and exam tables. These small strips are very useful for minor damage such as punctures, cuts and point abrasions found on the soft vinyl surfaces so commonly in use in healthcare facilities today. A very cost-effective way of quickly ensuring that damage is checked and doesn't grow or remain an infection risk.

[View how to correctly apply the Vinyl Patch.](#)



Vinyl Patches - Large

CleanPatch-V is stronger and designed to repair the more demanding clinical patient surfaces.

Key Benefits

- Constructed of thin, yet very tough medical grade vinyl
- Conforms to a patient care surfaces such as chairs and exam tables
- Glue seals right to the edges preventing fluid ingress and lift
- Cost effectively extend the life of capital equipment
- Fully cleanable with hospital grade disinfectants
- Clinically validated and TGA registered

Product Code

- 5 pack - CPVP-22002

Patch Dimensions

- 145 x 200mm Large rectangle patch
- There must be a >25mm margin around the damage site to ensure optimal adhesion.

Why Buy

The vinyl patch has been designed to repair surfaces commonly found on clinical equipment such as chairs and exam tables. These large rectangle patches are very useful for major damage such as cuts, tears and abrasion that can be found on the soft vinyl surfaces so commonly in use in healthcare facilities today. A cost-effective way of quickly ensuring that damage is checked and doesn't grow or remain an infection risk.

[View how to correctly apply the Vinyl Patch.](#)

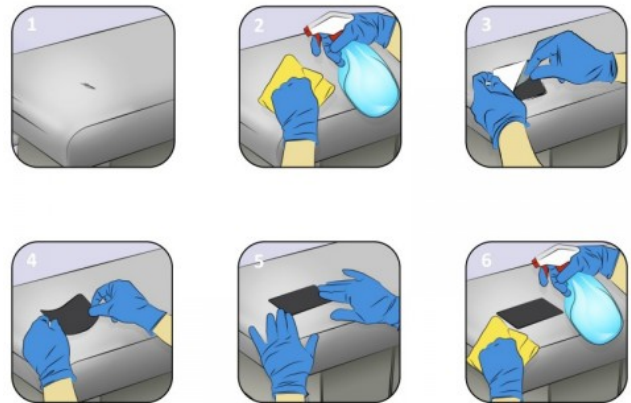


Vinyl Patch Application

Instructions to apply the CleanPatch-V to damaged vinyl surfaces such as examination tables and chairs.

Key Benefits

- Use CleanPatch-V on vinyl surfaces that are for patient use
- Apply on flat areas or over edges (2 dimensions)
- We recommend a maximum of 4 to 6 patches per product
- CleanPatch-V will adhere to the majority of vinyl surfaces and some types of nylon
- Do not use CleanPatch on surfaces with signs of fluid ingress or contamination, such as staining or warping
- We do not recommend layering multiple patches to cover large areas
- CleanPatch-V may not adhere to some types of nylon or coatings that contain Teflon
- To avoid damaging the precise edge, DO NOT CUT CleanPatch-V



Related Product Codes

- Variety Kit - 10 pack - CPVP-23001
- Small strip - 10 pack - CPVP-21001
- Large rectangle - 5 pack - CPVP-22002

Why Buy

1. Identify the damaged area and select the correct sized patch.
2. Clean the surface as per facility protocol and allow to dry.
3. Remove the white backing from the CleanPatch-V.
4. Hold the edges of the patch and position it over the damage.
5. Apply firm pressure to the patch, out to the edges.
6. Clean the patch and surrounding area again as per hospital protocol.

There must be a >25mm margin around the damage site to ensure optimal adhesion.



Gel Pad Repair Patches

Gel pads and positioners are used in high-risk environments such as operating rooms and are prone to damage such as tears and punctures from daily use. CleanPatch-P restores to an intact and hygienic state to comply with infection control processes.



Gel Pad Patches



Gel Pad Patch Application

Gel Pad Patches

CleanPatch®-P repair patch for gel pads and positioners and restores damaged surfaces to an intact and hygienic state in seconds.

Key Benefits

- Constructed of ultra thin, clear and tough material
- Conforms to curved pressure care surfaces
- Glue seals right to the edges preventing fluid ingress and lift
- Cost effectively extend the life of specialist equipment
- Fully cleanable with hospital grade disinfectants
- Clinically validated and TGA registered

Product Code

- 10 pack - CPGP-31001

Patch Dimensions

- 45 x 89mm rectangle patch
- There must be a >25mm margin around the damage site to ensure optimal adhesion.

Why Buy

The gel pad patch has been designed to repair surfaces of gel positioners commonly used in operating room environments. The rectangle shaped patches are very useful for damage such as tears, punctures and abrasion that can be found on these high-risk surfaces. A cost-effective way of quickly ensuring that damage is checked and doesn't remain an infection risk.

[View how to correctly apply the Gel Pad Patch.](#)



Gel Pad Patch Application

Instructions to apply the CleanPatch-P to damaged gel pad surfaces that are used in surgical areas.

Key Benefits

- Use CleanPatch-P on soft gel surfaces that are for pressure reduction and positioning
- Apply on flat areas or over edges (2 dimensions)
- We recommend a maximum of 3 patches per gel pad
- We do not recommend layering multiple patches to cover large areas
- To avoid damaging the precise edge, DO NOT CUT CleanPatch-P

Related Product Codes

- 10 pack - CPGP-31001

Why Buy

1. Identify the damaged area and get a patch.
2. Clean the surface as per facility protocol and allow to dry.
3. Remove the white backing from the CleanPatch-P.
4. Hold the edges of the patch and position it over the damage.
5. Apply firm pressure to the patch, out to the edges. Slowly and carefully remove the clear top liner.
6. Clean the patch and surrounding area again as per hospital protocol.

There must be a >25mm margin around the damage site to ensure optimal adhesion.

